

Aluminum (III) Oxide (FW = 101.96)
Surface Composition Table

Description: Al₂O₃ (99%), analyzed at 90 deg TOA, mesh at 1mm, non-conductive fused into clear glass 1 mm thick, mp 2040 C, d 3.97

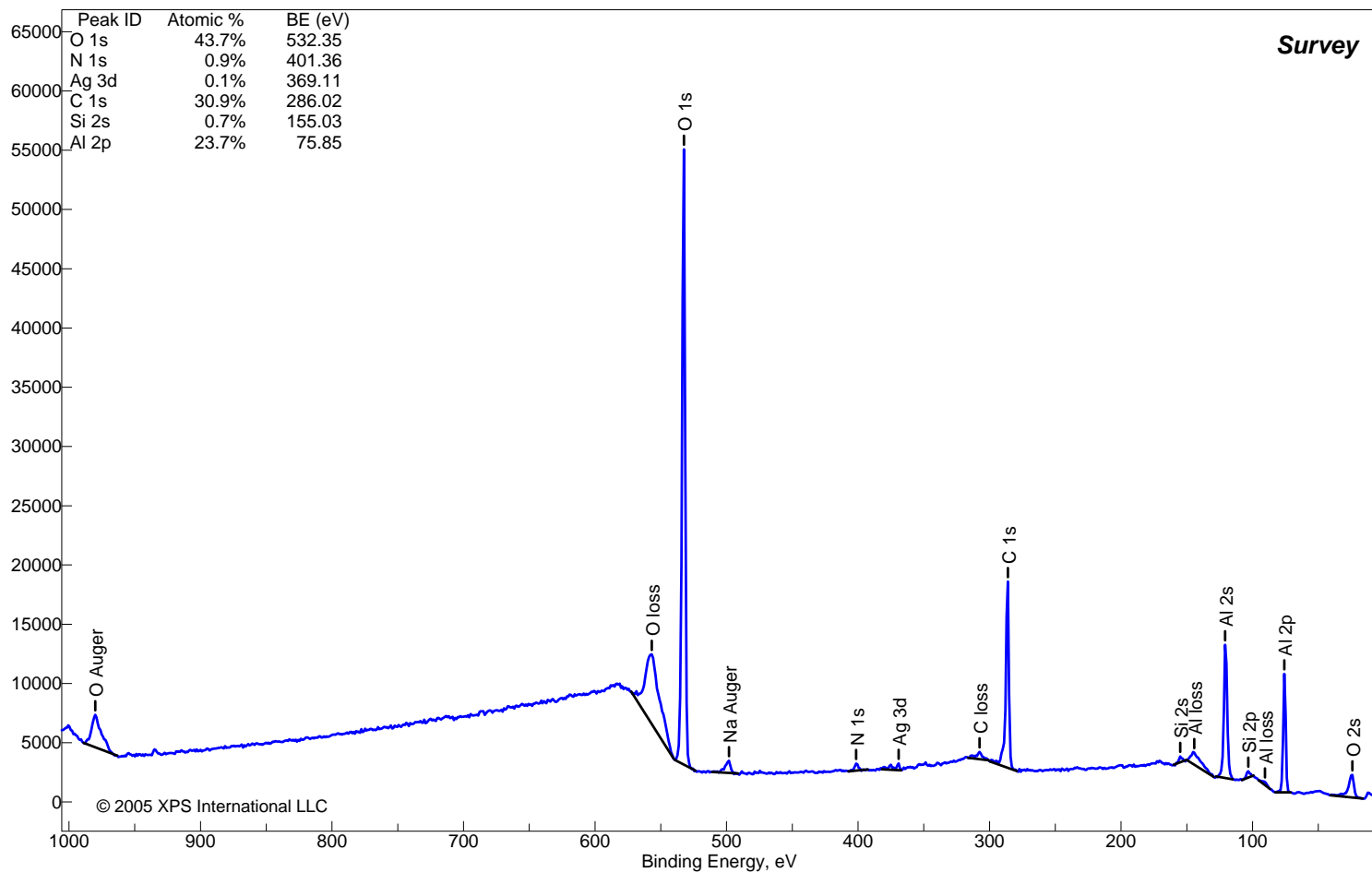
Peak ID	Corrected BE (eV)	Measured BE (eV)	Scofield RSF	RSF Exponent	Normalized Peak Area	Atomic %
O 2s	24.0	19.9	0.14	1.2	12,578	
Al 2p	75.9	71.8	0.54	1.2	28,737	23.7%
Al loss	90.5	86.4	0.00	1.5	1,485	
Si 2p	103.2	99.1	0.82	1.5	2,122	
Al 2s	120.8	116.7	0.75	1.2	42,744	
Al loss	144.3	140.2	0.00	1.2	11,965	
Si 2s	155.0	150.9	0.96	1.2	1,481	0.7%
C 1s	286.0	281.9	1.00	1.2	57,477	30.9%
C loss	307.5	303.4	0.00	1.2	4,508	
Ag 3d	369.1	365.0	18.04	1.2	4,186	0.1%
N 1s	401.4	397.3	1.80	1.2	2,528	0.9%
Na Auger	498.1	494.0	3.40	1.2	6,270	
O 1s	532.4	528.3	2.93	1.2	180,659	43.7%
O loss	556.8	552.7	0.00	1.2	95,458	
O Auger	980.1	976.0	0.00	1.2	29,773	

© 2005 XPS International LLC

Aluminum (III) Oxide (FW = 101.96)

Sample Description: Al₂O₃ (99%) fused into glass 1mm thick
analyzed as received at 90 deg TOA , mesh-screen at 1mm

Counts

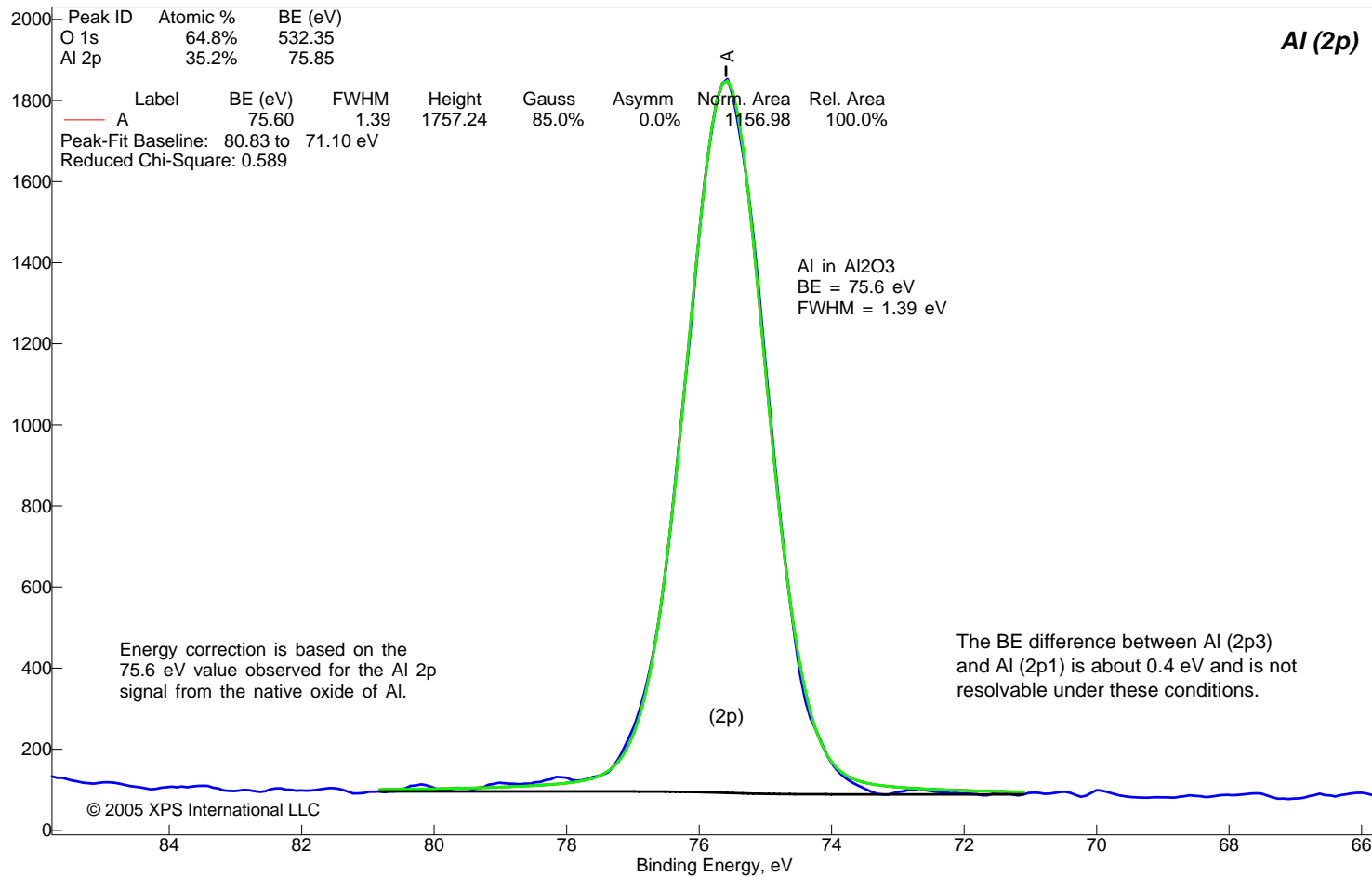


Aluminum (III) Oxide (FW = 101.96)

Sample Description: Fused Al₂O₃

(as rec'd, surface of 1 mm thick plate, screen, 90 DEG TOA)

Counts

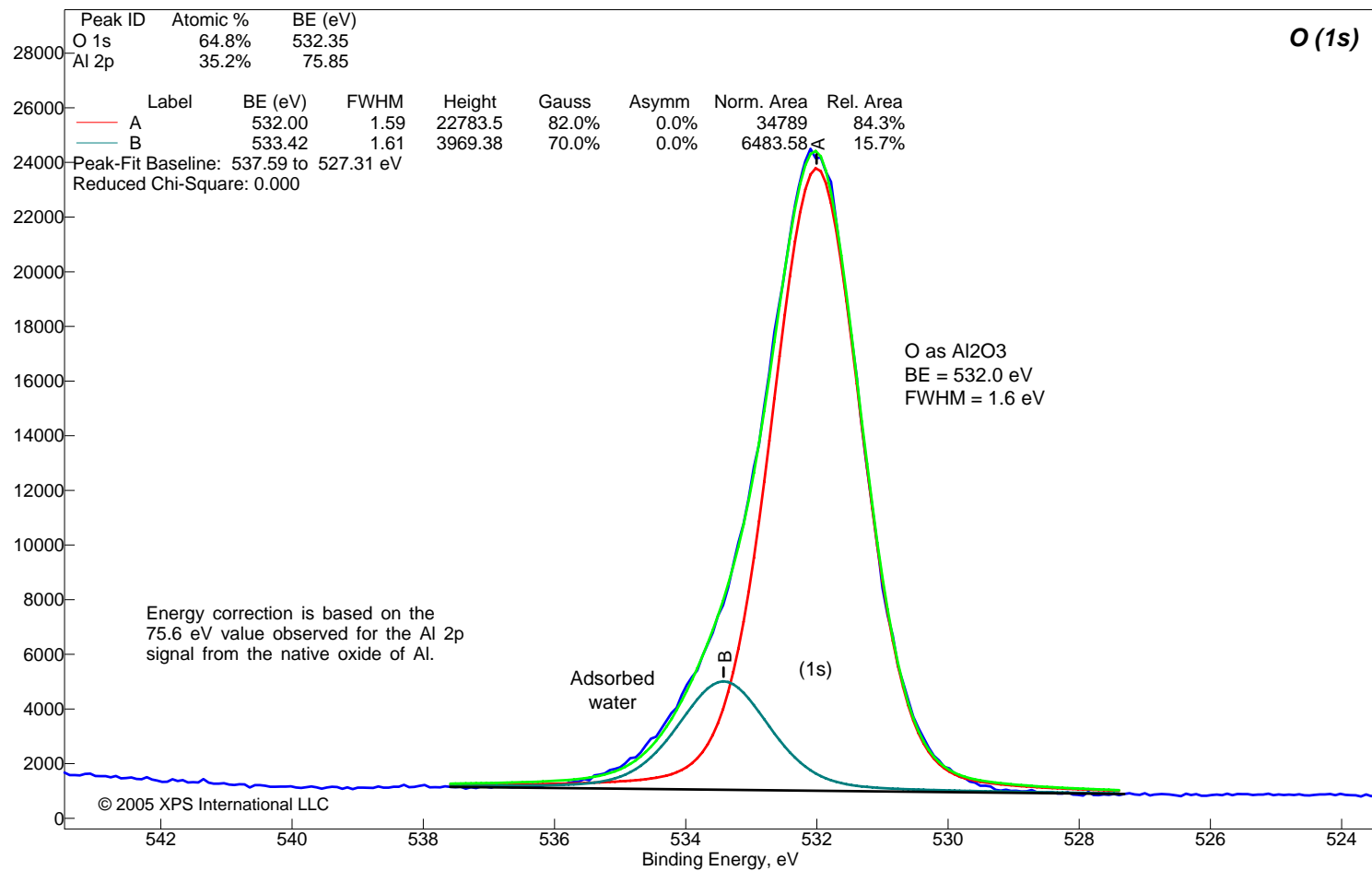


Aluminum (III) Oxide (FW = 101.96)

Sample Description: Fused Al₂O₃

(as rec'd, surface of 1 mm thick plate, screen, 90 DEG TOA)

Counts

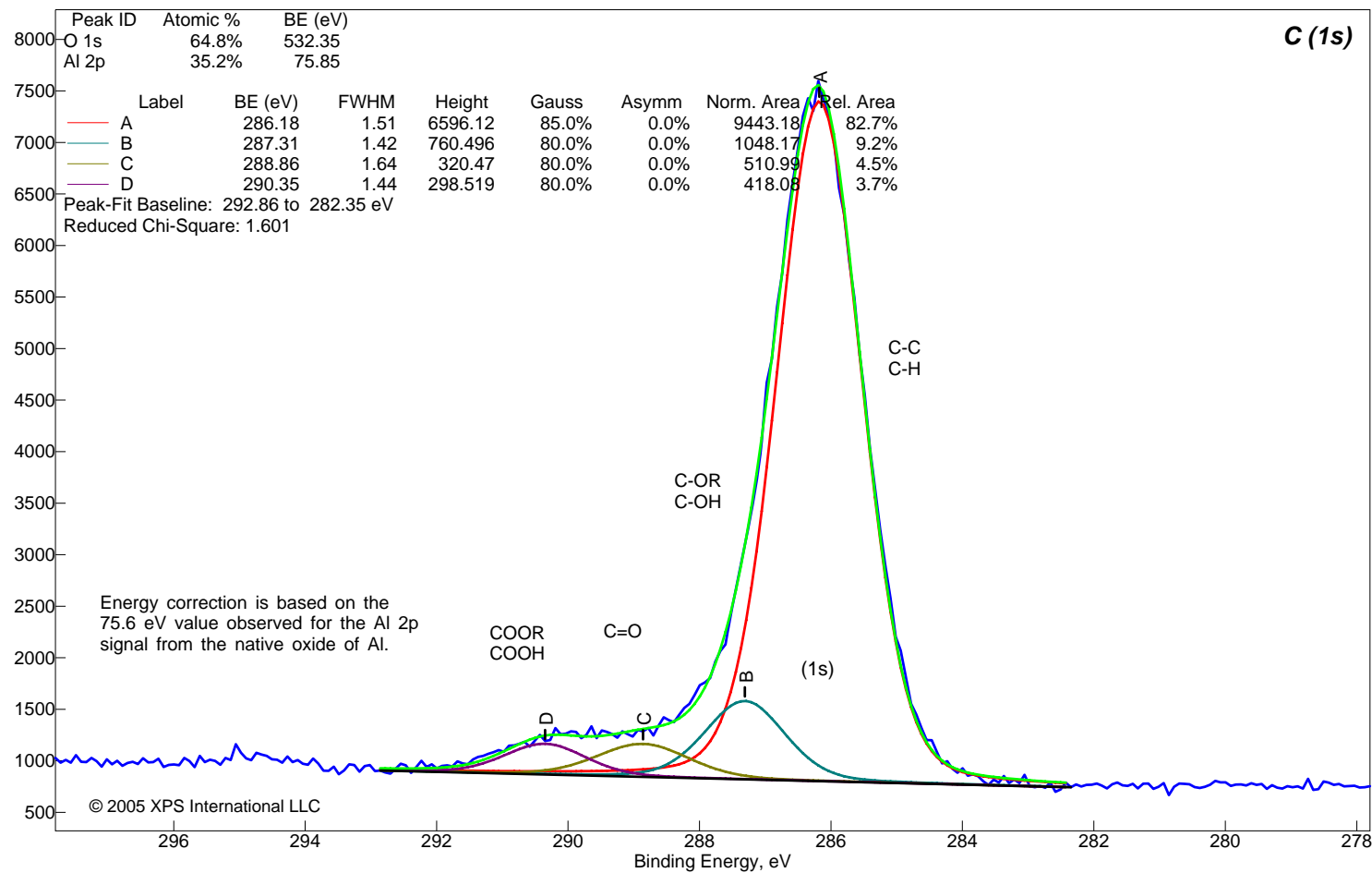


Aluminum (III) Oxide (FW = 101.96)

Sample Description: Fused Al₂O₃

(as rec'd, surface of 1 mm thick plate, screen, 90 DEG TOA)

Counts

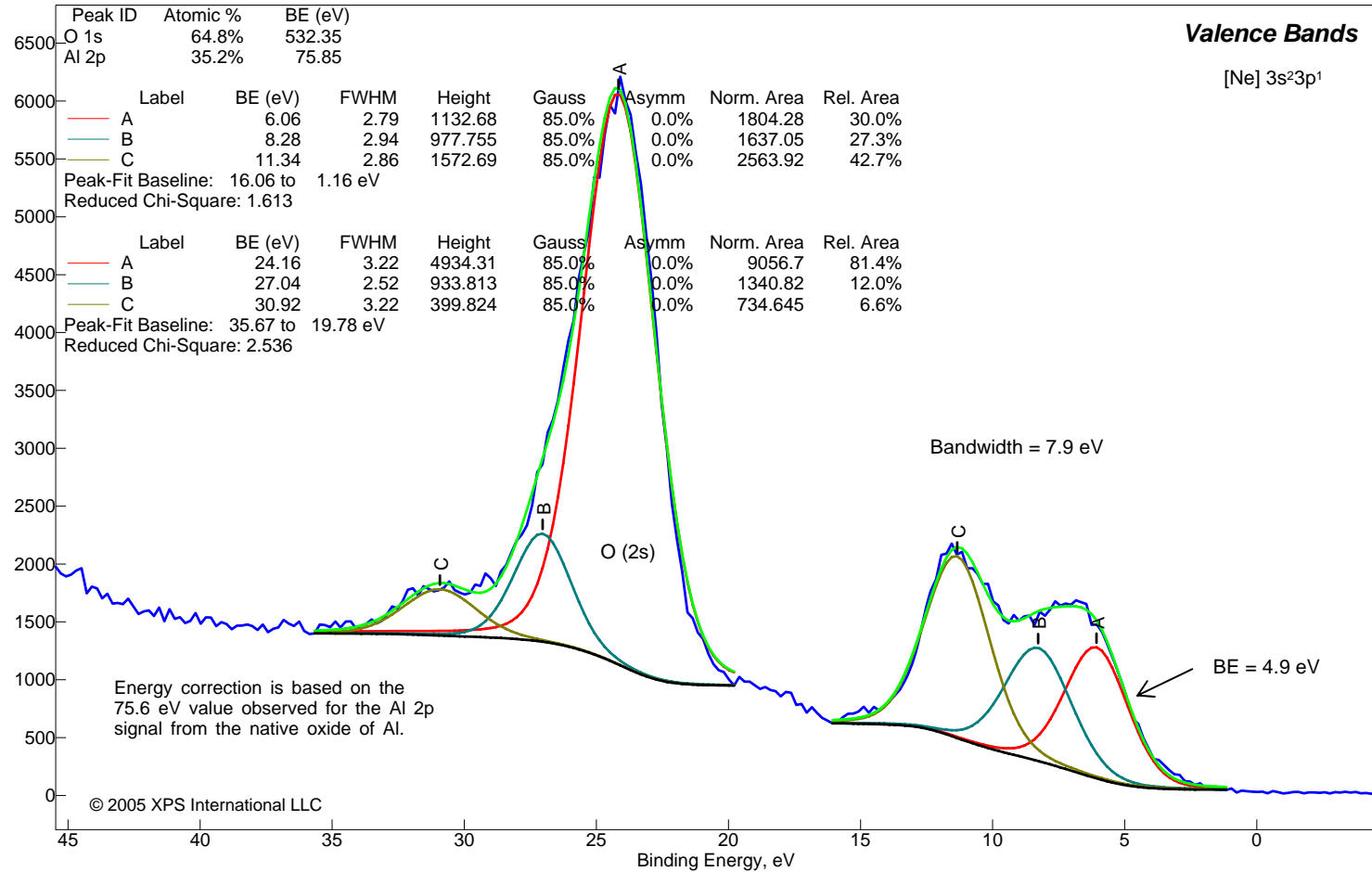


Aluminum (III) Oxide (FW = 101.96)

Sample Description: Fused Al₂O₃

(as rec'd, surface of 1 mm thick plate, screen, 90 DEG TOA)

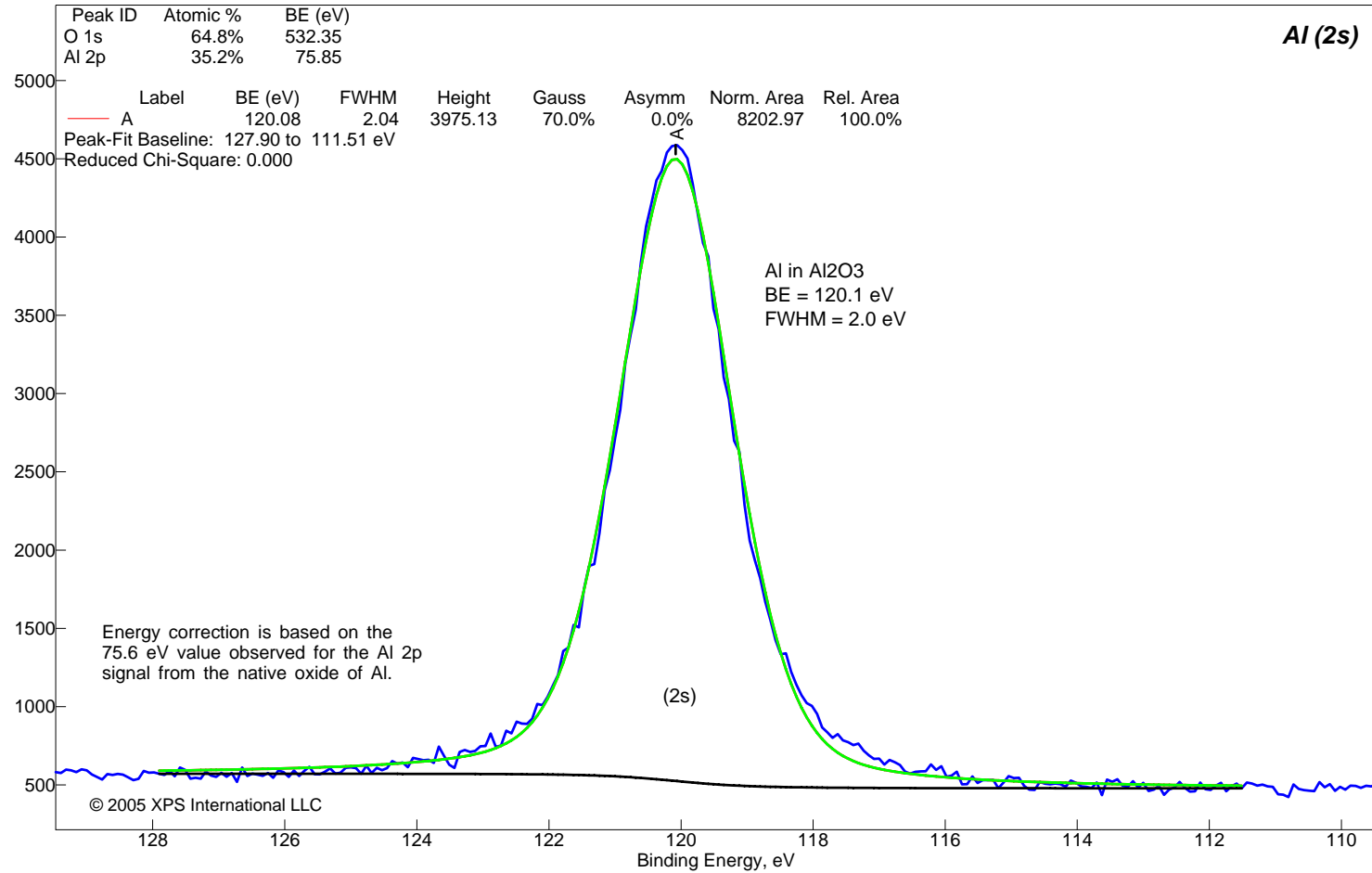
Counts



Aluminum (III) Oxide (FW = 101.96)

Sample Description: Fused Al₂O₃
(as rec'd, surface of 1 mm thick plate, screen, 90 DEG TOA)

Counts



Aluminum (III) Oxy-hydroxide (FW = 59.99)
Surface Composition Table

Description: AIOOH (Diaspore, Al₂O₃-H₂O) a natural mineral, analyzed at 90 deg TOA, mesh at 1 mm, non-conductive white, freshly fractured in air

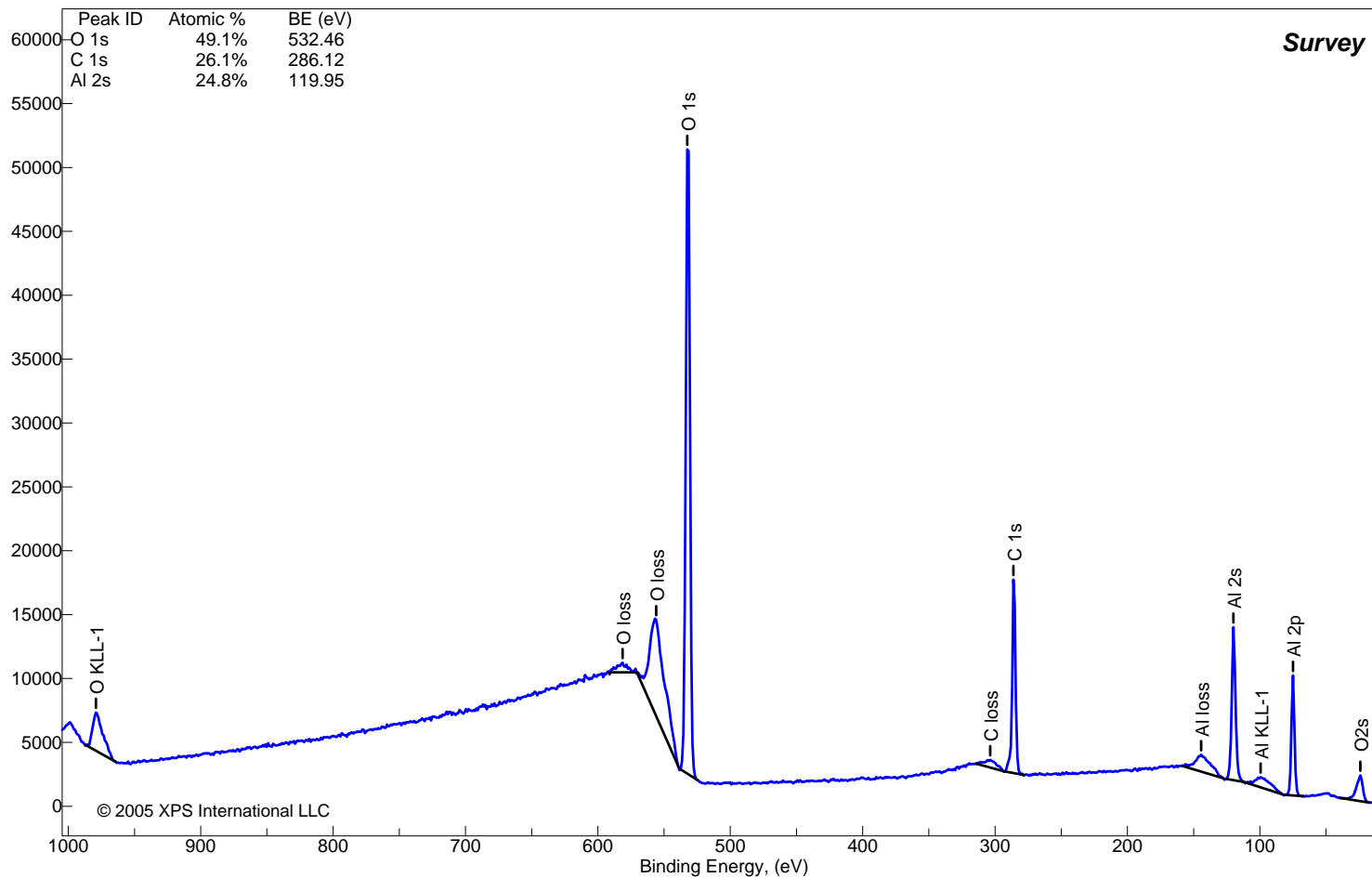
Peak ID	Corrected BE (eV)	Measured BE (eV)	Scofield RSF	RSF Exponent	Normalized Peak Area	Atomic %
O 2s	24.2	24.2	0.15	1.4	2,945	
Al 2p	75.0	75.0	0.54	1.4	6,323	
Al KLL-1	99.4	99.4	0.22	1.4	2,556	
Al 2s	119.9	119.9	0.75	1.4	9,912	24.8%
Al loss	144.4	144.4	0.00	1.4	4,440	
C 1s	286.1	286.1	1.00	1.4	11,569	26.1%
C loss	303.7	303.7	0.00	1.4	1,695	
O 1s	532.5	532.5	2.93	1.4	46,298	49.1%
O loss	555.9	555.9	0.00	1.4	25,489	
O loss	581.3	581.3	0.00	1.4	1,853	
O KLL-1	979.2	979.2	0.70	1.4	6,850	

© 2005 XPS International LLC

Aluminum (III) Oxy-hydroxide (FW = 59.99)

Sample Description: AIOOH (Diaspore, Al₂O₃-H₂O), analyzed at 90 deg TOA, mesh at 1 mm, non-conductive white, freshly fractured in air, mp xxx, d xxx

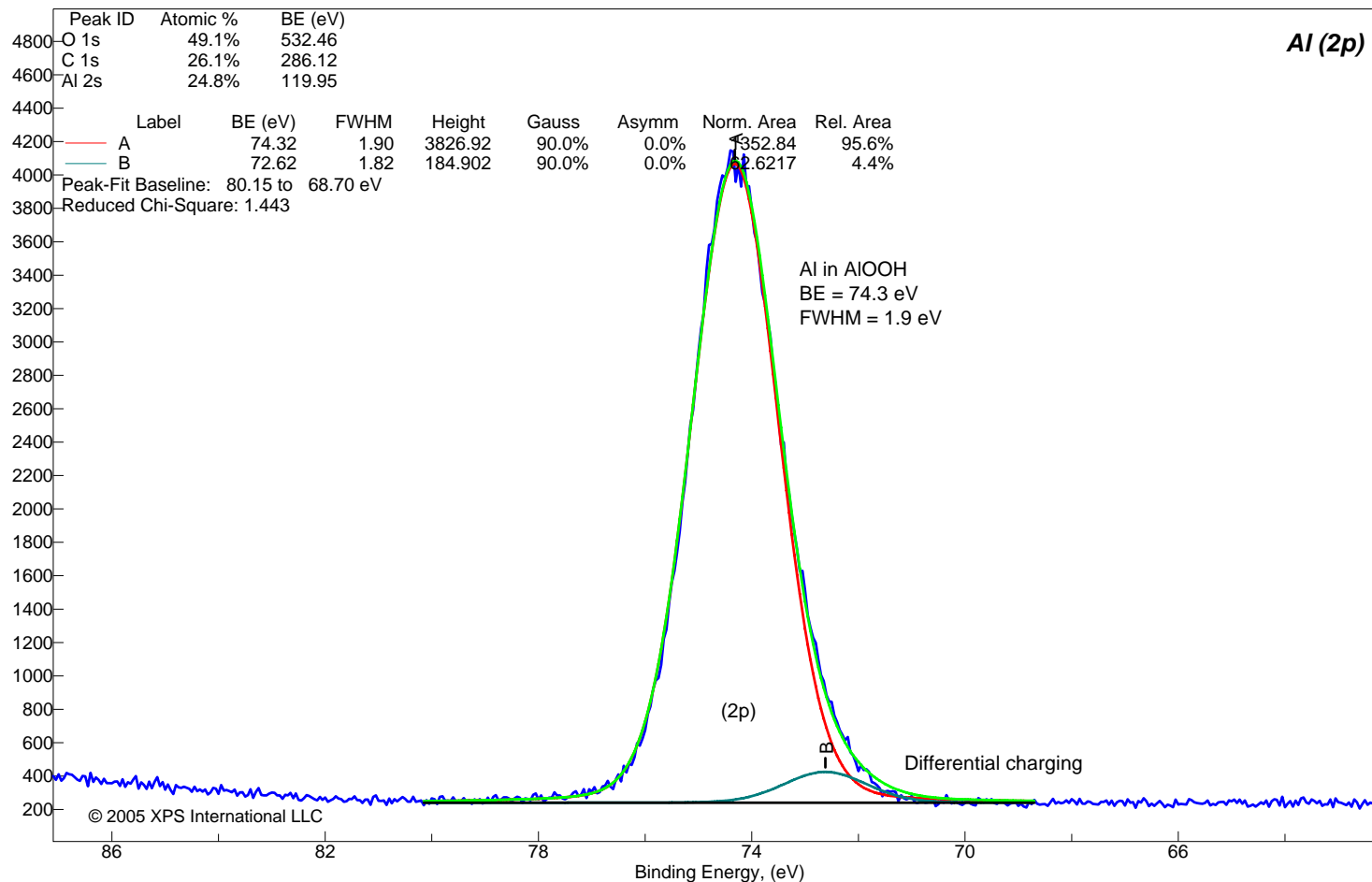
Counts



Aluminum (III) Oxy-hydroxide (FW = 59.99)

Sample Description: AIOOH (Diaspore, Al₂O₃-H₂O), analyzed at 90 deg TOA, mesh at 1 mm, non-conductive white, freshly fractured in air, mp xxx, d xxx

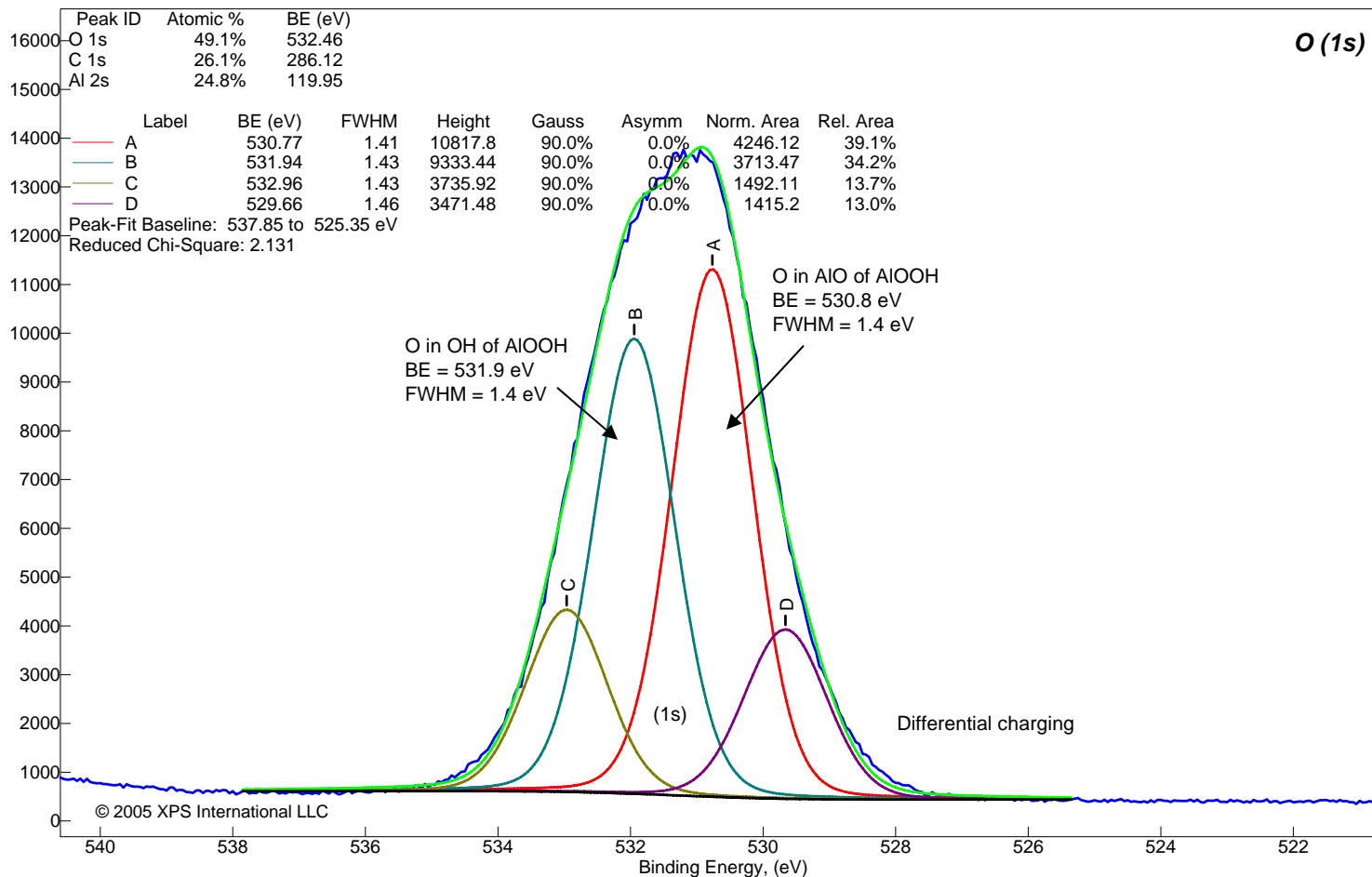
Counts



Aluminum (III) Oxy-hydroxide (FW = 59.99)

Sample Description: AIOOH (Diaspore, Al₂O₃-H₂O), analyzed at 90 deg TOA, mesh at 1 mm, non-conductive white, freshly fractured in air, mp xxx, d xxx

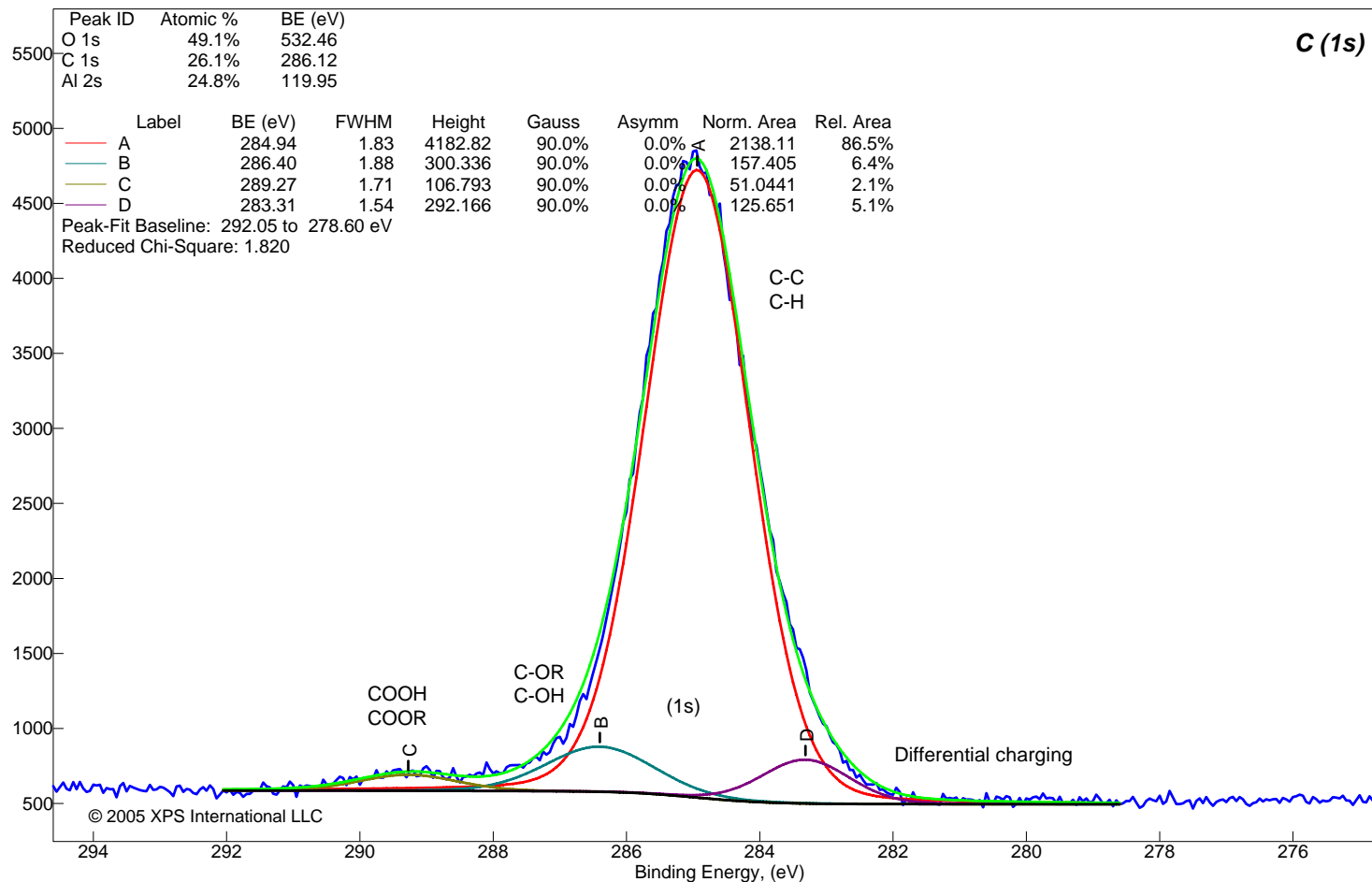
Counts



Aluminum (III) Oxy-hydroxide (FW = 59.99)

Sample Description: AIOOH (Diaspore, Al₂O₃-H₂O), analyzed at 90 deg TOA, mesh at 1 mm, non-conductive white, freshly fractured in air, mp xxx, d xxx

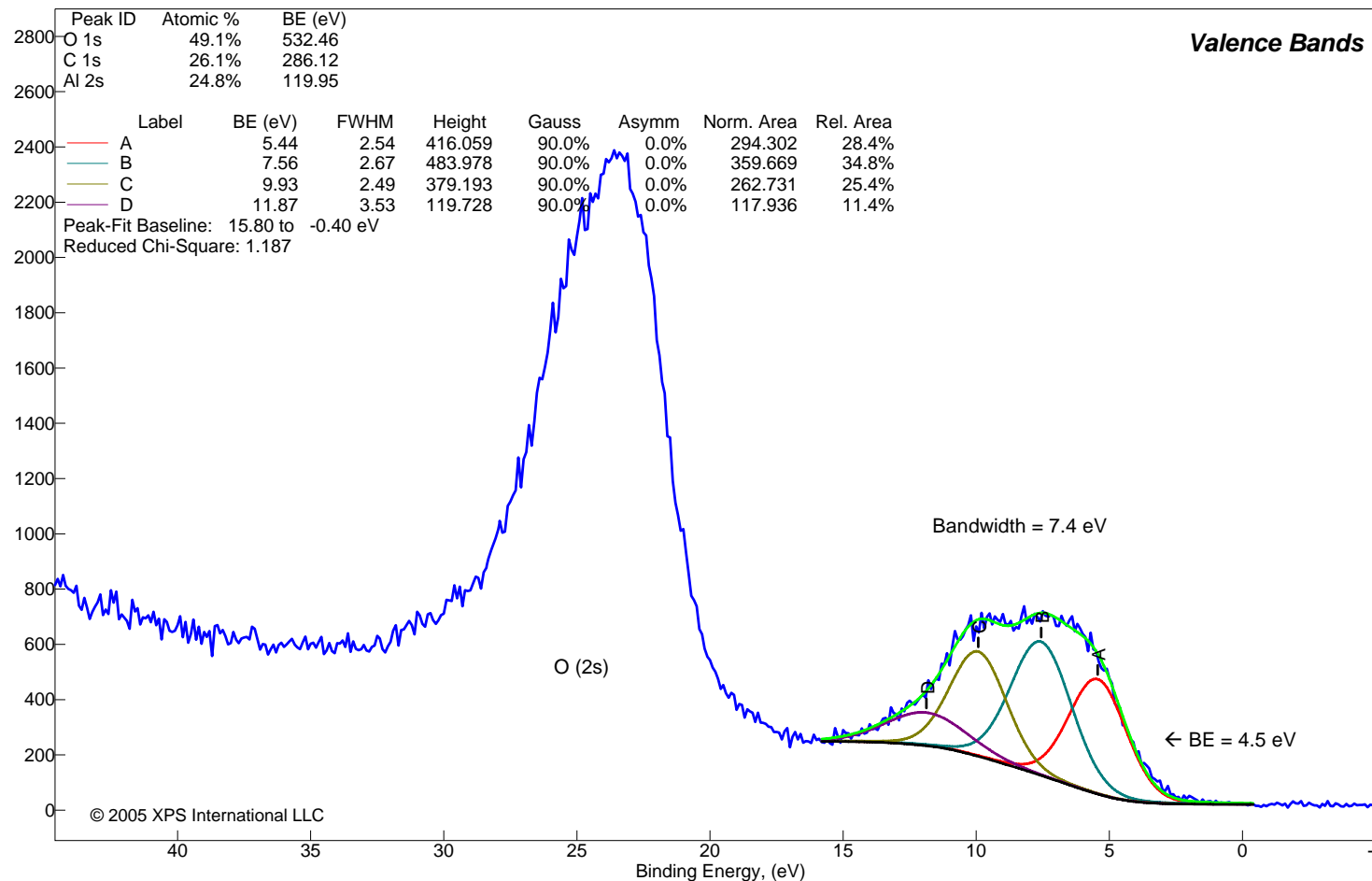
Counts



Aluminum (III) Oxy-hydroxide (FW = 59.99)

Sample Description: AIOOH (Diaspore, Al₂O₃-H₂O), analyzed at 90 deg TOA, mesh at 1 mm, non-conductive white, freshly fractured in air, mp xxx, d xxx

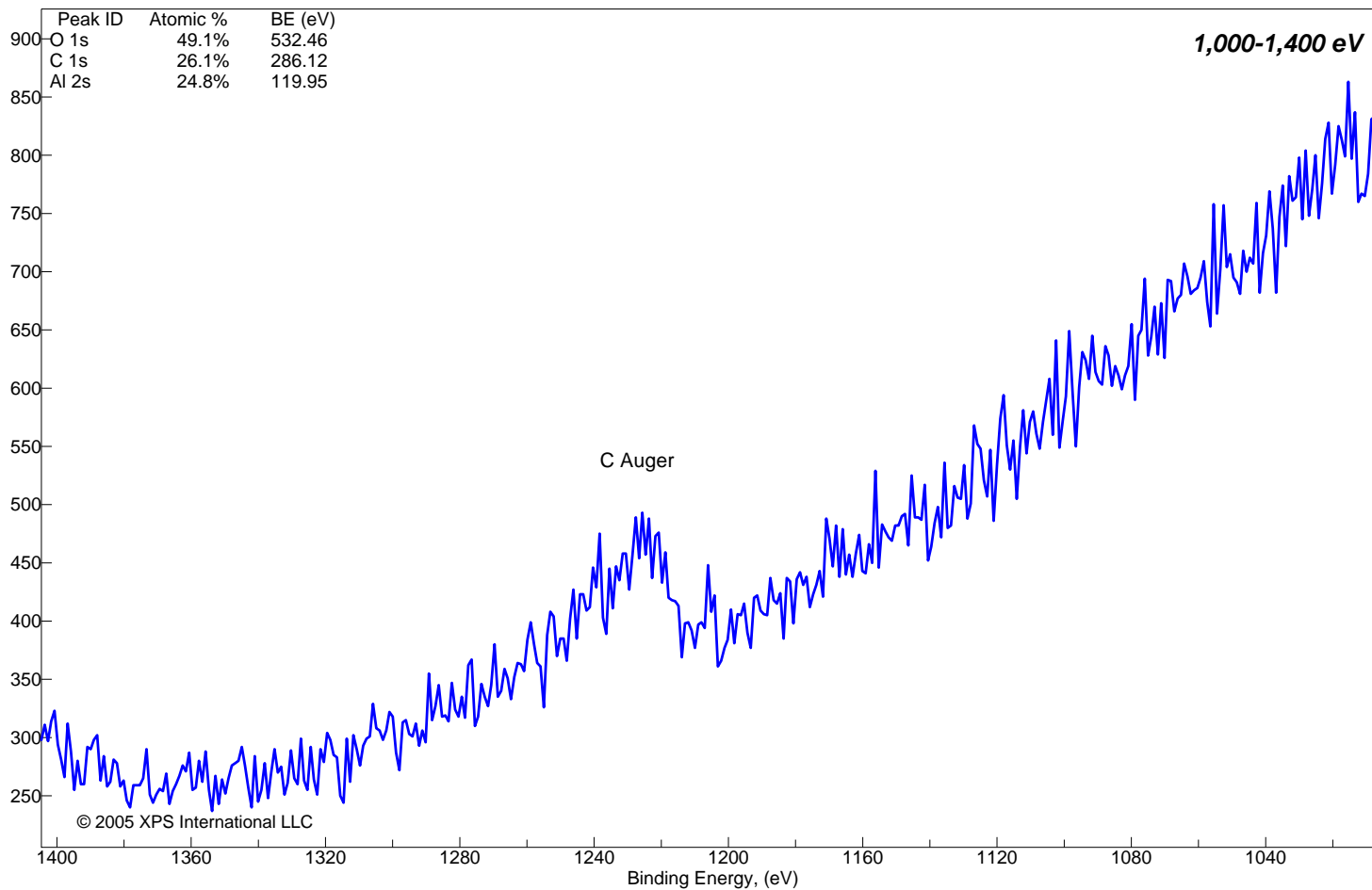
Counts



Aluminum (III) Oxy-hydroxide (FW = 59.99)

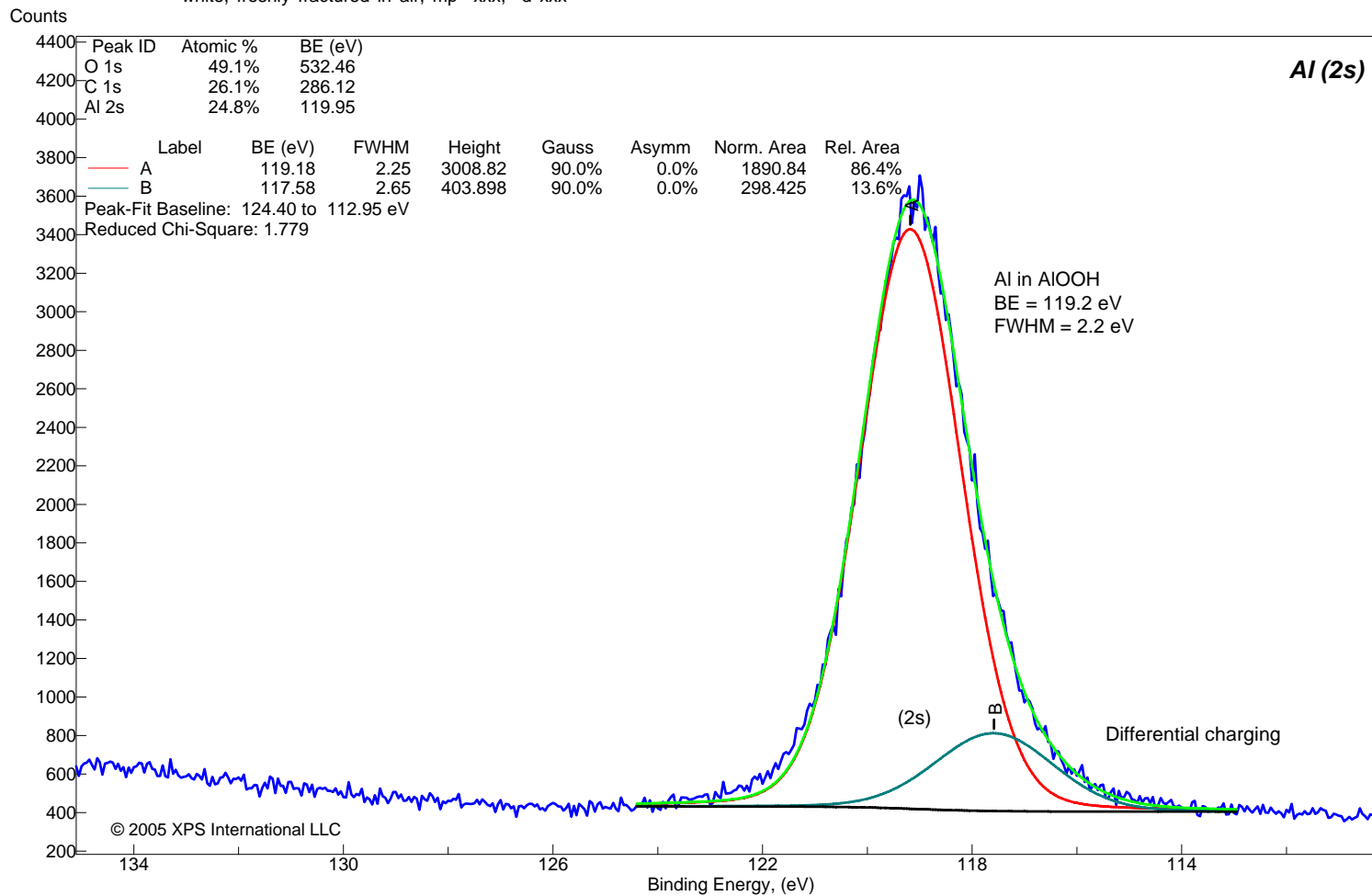
Sample Description: AIOOH (Diaspore, Al₂O₃-H₂O), analyzed at 90 deg TOA, mesh at 1 mm, non-conductive white, freshly fractured in air, mp xxx, d xxx

Counts



Aluminum (III) Oxy-hydroxide (FW = 59.99)

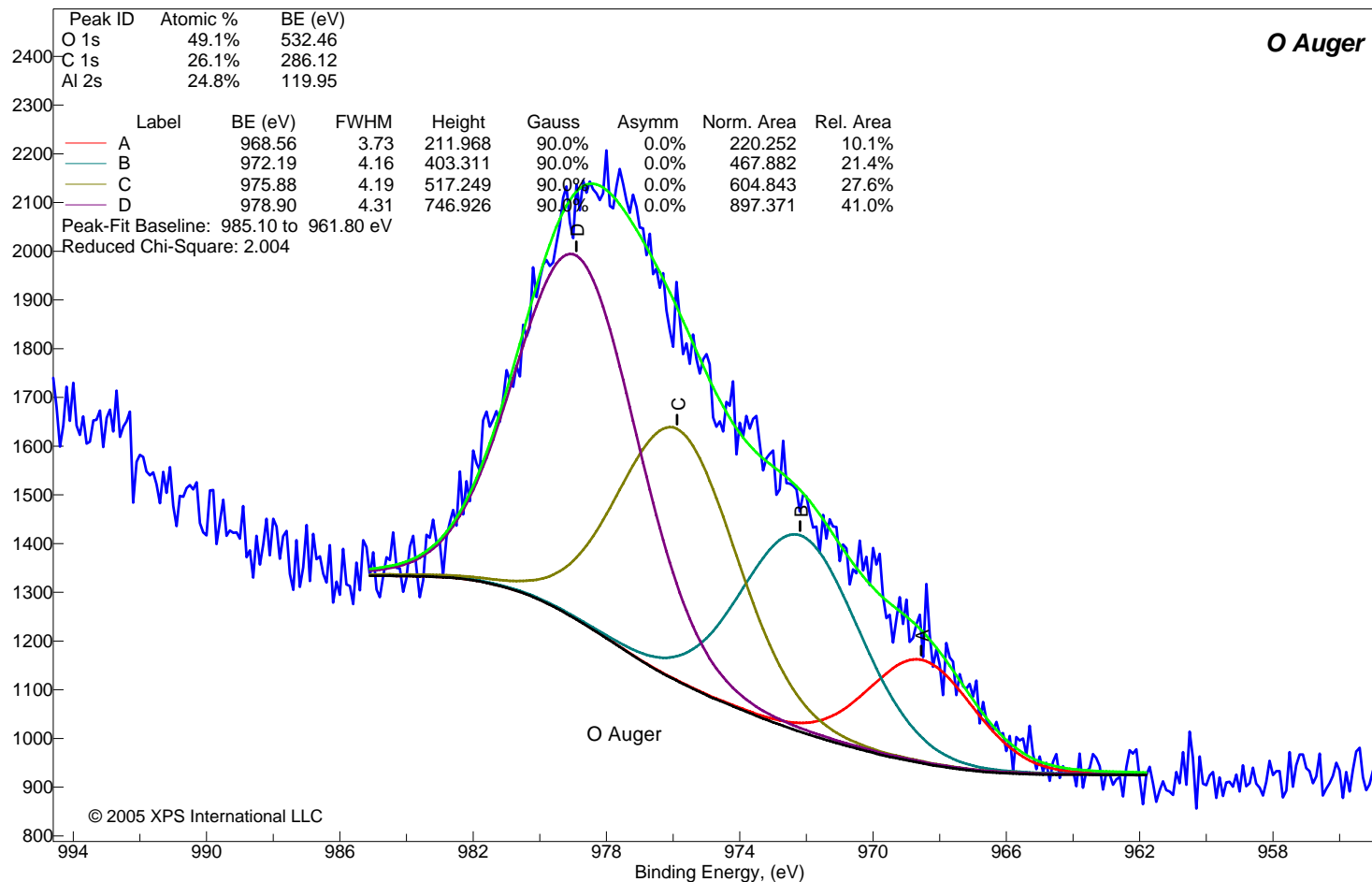
Sample Description: AIOOH (Diaspore, Al₂O₃-H₂O), analyzed at 90 deg TOA, mesh at 1 mm, non-conductive white, freshly fractured in air, mp xxx, d xxx



Aluminum (III) Oxy-hydroxide (FW = 59.99)

Sample Description: AIOOH (Diaspore, Al₂O₃-H₂O), analyzed at 90 deg TOA, mesh at 1 mm, non-conductive white, freshly fractured in air, mp xxx, d xxx

Counts



Aluminum (III) Hydroxide (FW = 78.00)
Surface Composition Table

Description: Al(OH)₃ (Tech.) from Perfect Parts Chem. Co., analyzed at 35 deg TOA, no mesh, non-conductive white powder pressed onto double sided tape, dec to Al₂O₃ >300 C, sol in aq. alkaline soln, HCl, H₂SO₄

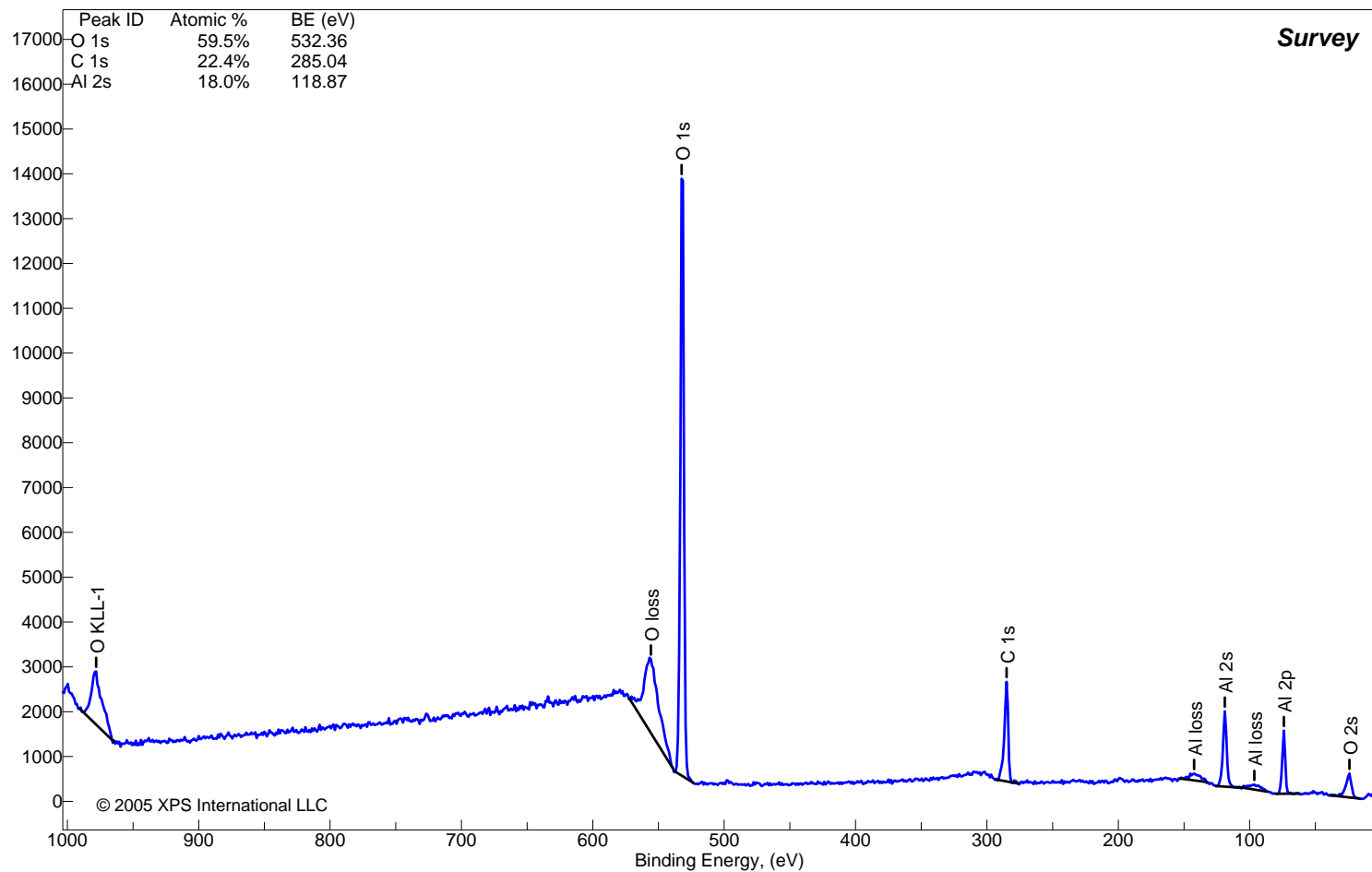
Peak ID	Corrected BE (eV)	Measured BE (eV)	Scofield RSF	RSF Exponent	Normalized Peak Area	Atomic %
O 2s	24.0	20.2	0.14	0.6	3,409	
Al 2p	73.9	70.1	0.54	0.6	4,885	
Al loss	96.4	92.6	0.00	0.6	1,419	
Al 2s	118.9	115.1	0.75	1.5	7,230	18.0%
Al loss	142.3	138.5	0.00	0.6	2,350	
C 1s	285.0	281.2	1.00	1.5	9,833	22.4%
O 1s	532.4	528.6	2.93	1.5	54,136	59.5%
O loss	555.8	552.0	0.00	0.6	28,217	
O KLL-1	978.1	974.3	0.70	0.6	13,859	

© 2005 XPS International LLC

Aluminum (III) Hydroxide (FW = 78.00)

Sample Description: Al(OH)₃ (Tech. Grade) from Perfect Parts Chemical Co.
analyzed at 35 deg TOA, pressed onto double sided tape, no mesh-screen

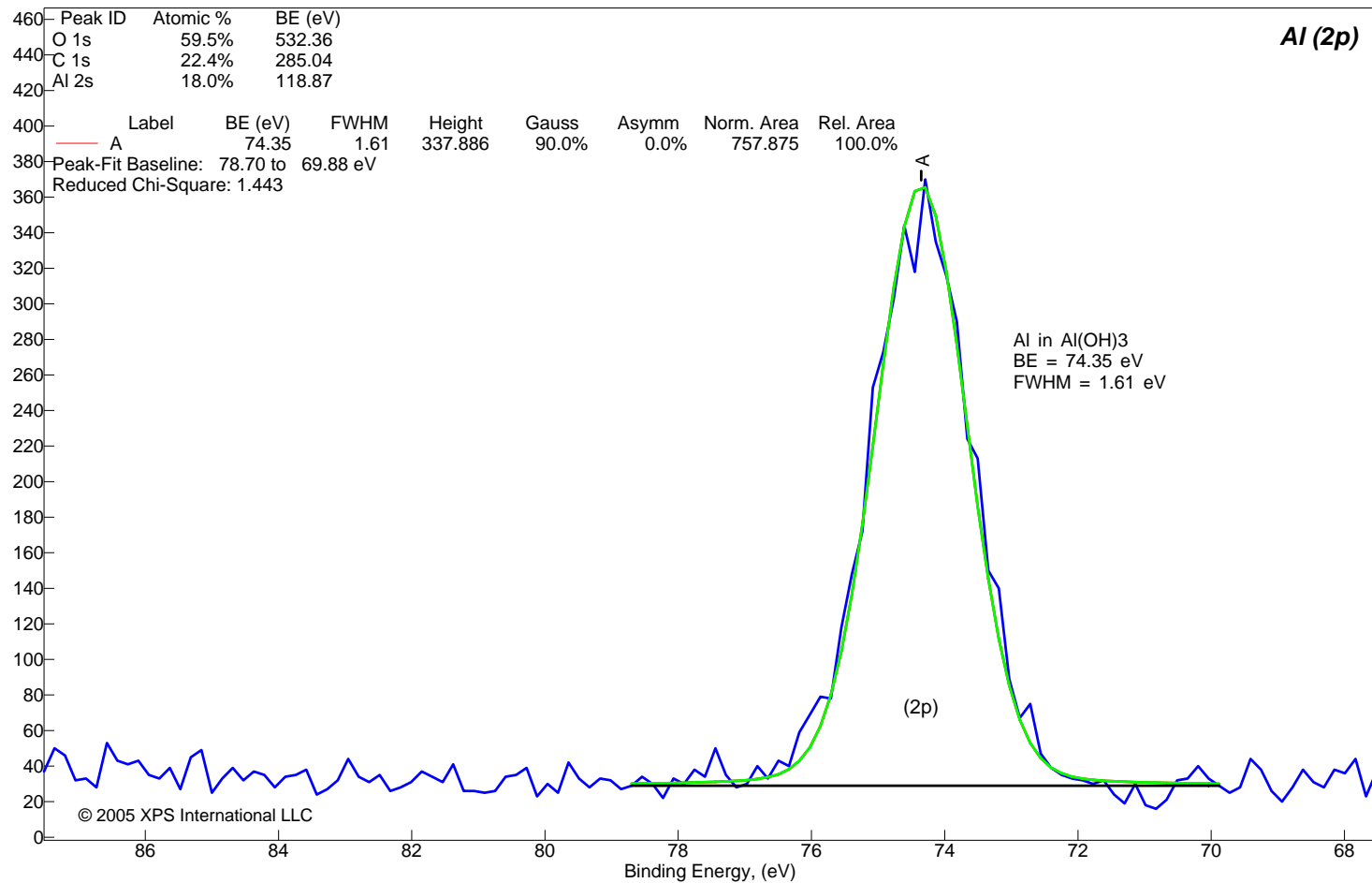
Counts



Aluminum (III) Hydroxide (FW = 78.00)

Sample Description: ALUMINUM HYDROXIDE (Al(OH)₃) powder/tape (no mesh)
TECHNICAL GRADE, PERFECT PARTS CHEMICAL CO.

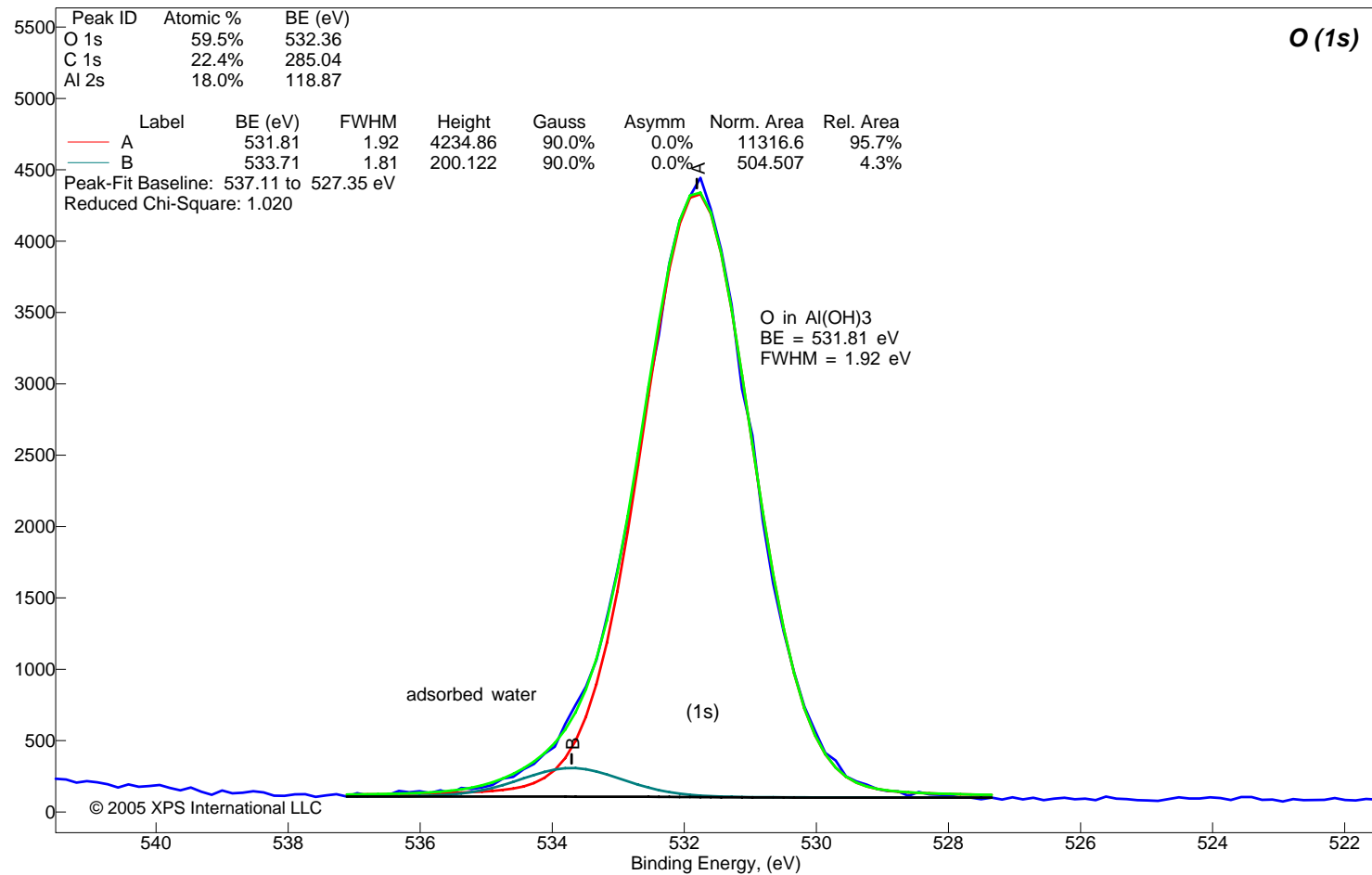
Counts



Aluminum (III) Hydroxide (FW = 78.00)

Sample Description: ALUMINUM HYDROXIDE (Al(OH)₃) powder/tape (no mesh)
TECHNICAL GRADE, PERFECT PARTS CHEMICAL CO.

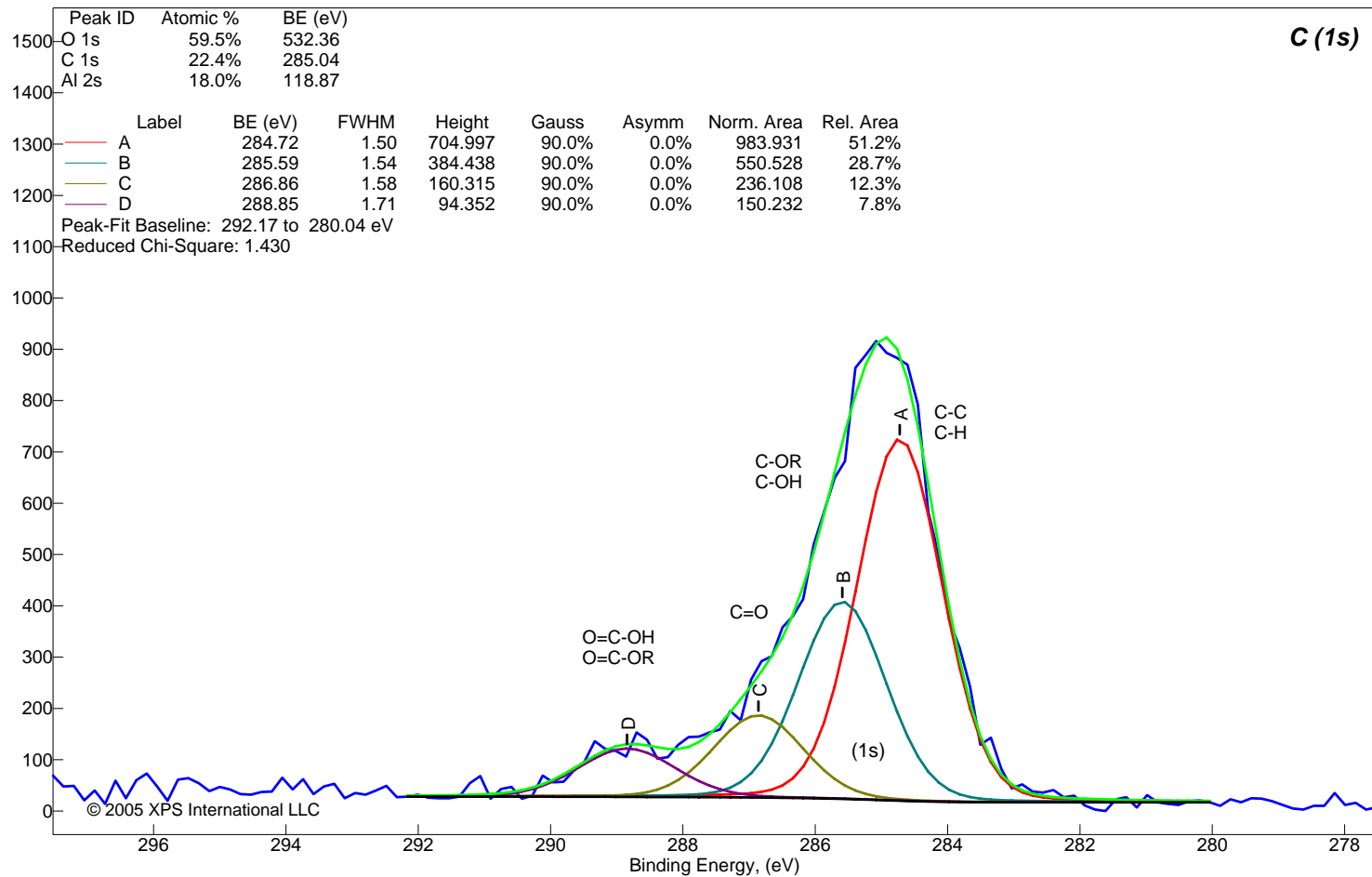
Counts



Aluminum (III) Hydroxide (FW = 78.00)

Sample Description: ALUMINUM HYDROXIDE (Al(OH)₃) powder/tape (no mesh)
TECHNICAL GRADE, PERFECT PARTS CHEMICAL CO.

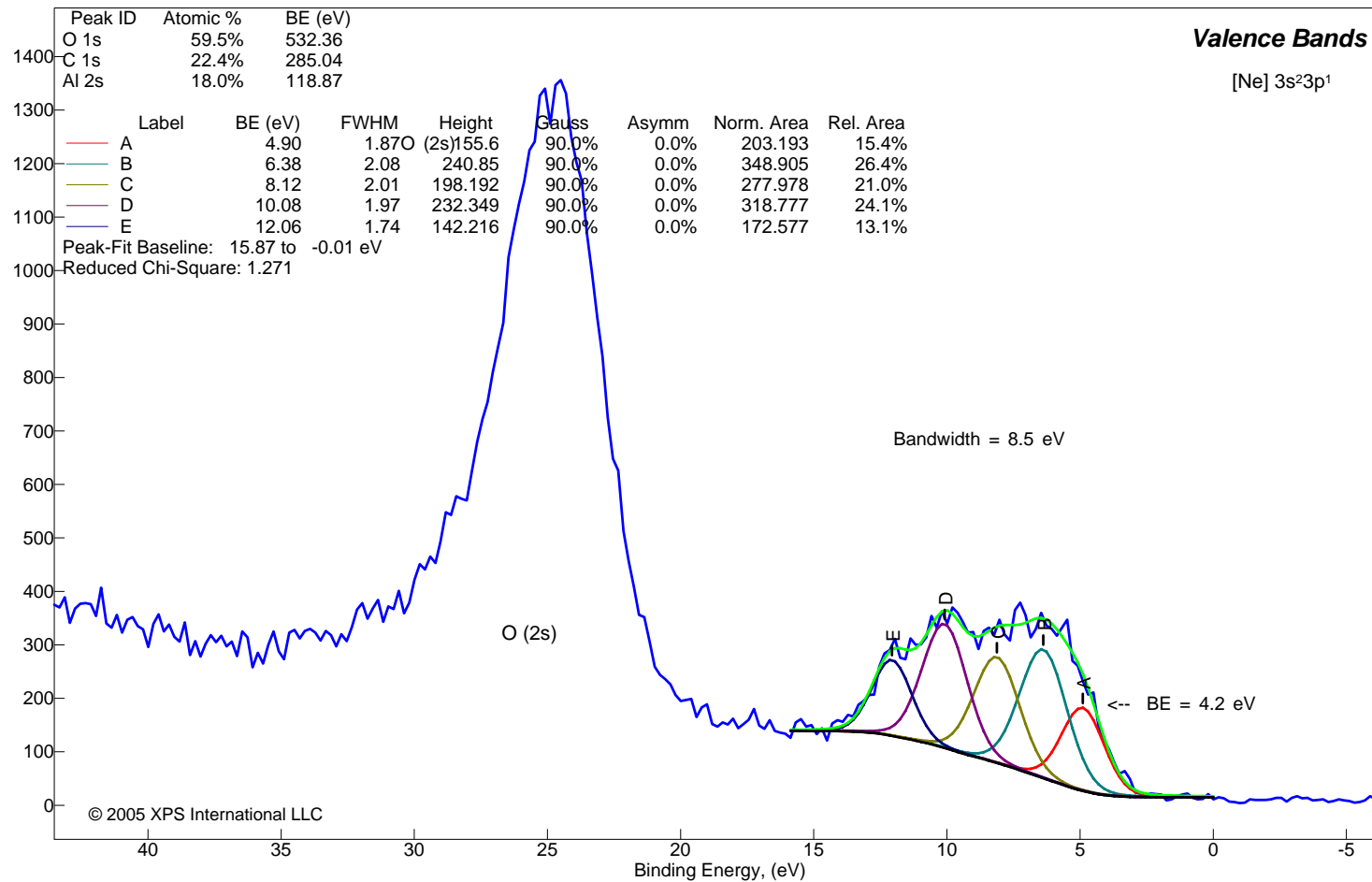
Counts



Aluminum (III) Hydroxide (FW = 78.00)

Sample Description: ALUMINUM HYDROXIDE (Al(OH)₃) powder/tape (no mesh)
TECHNICAL GRADE, PERFECT PARTS CHEMICAL CO.

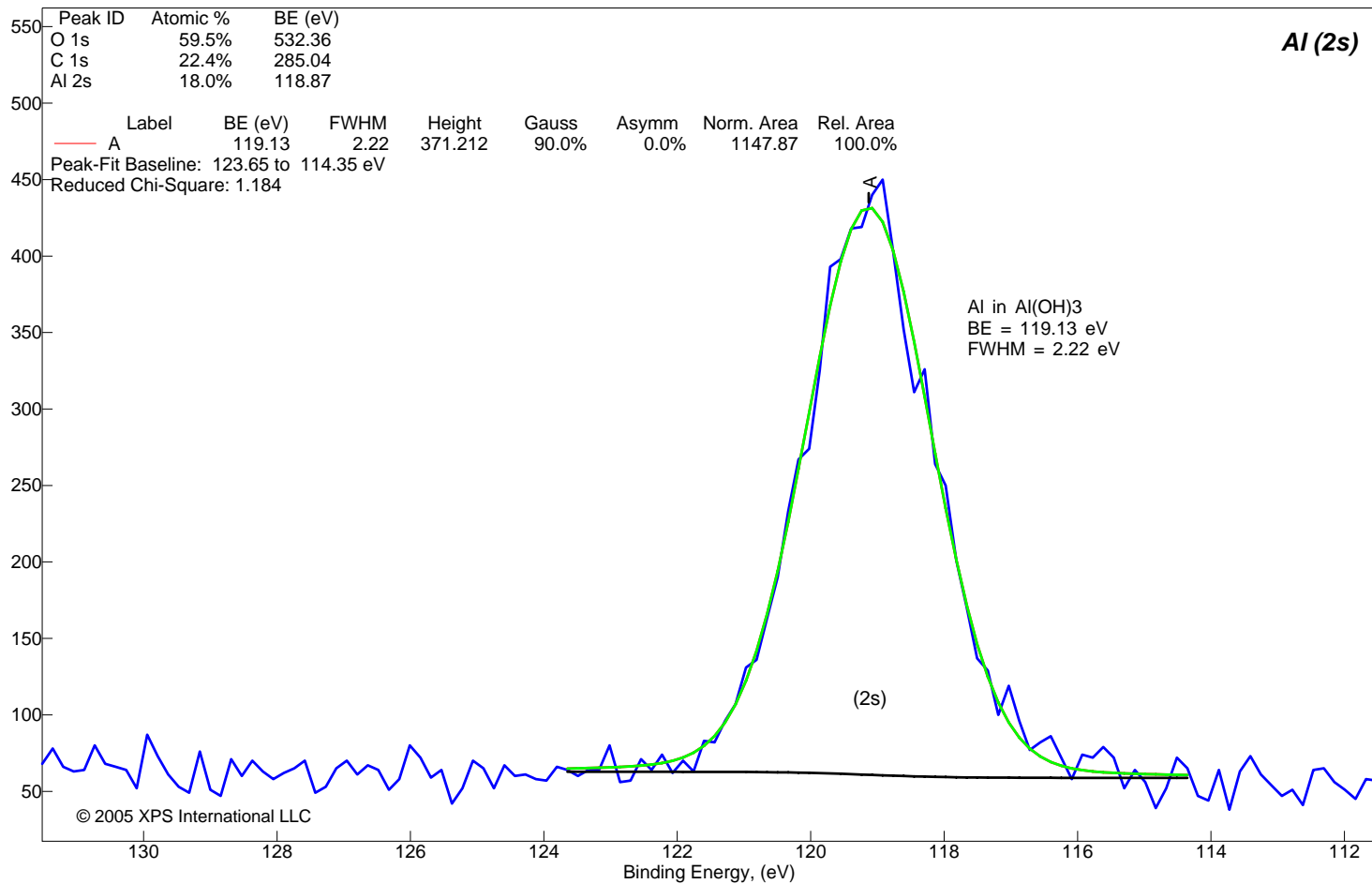
Counts



Aluminum (III) Hydroxide (FW = 78.00)

Sample Description: ALUMINUM HYDROXIDE (Al(OH)₃) powder/tape (no mesh)
TECHNICAL GRADE, PERFECT PARTS CHEMICAL CO.

Counts



Arsenic (III) Oxide (FW = 197.84)
Surface Composition Table

Description: As₂O₃ (99.995%) from Aldrich Lot# 04445CW, analyzed at 90 deg TOA, mesh at 1mm, non-conductive white powder pressed into 3 mm pellet, mp 312 C, d 3.7, sol in boiling water, HCl, insol. in alcohol

Peak ID	Corrected BE (eV)	Measured BE (eV)	Scofield RSF	RSF Exponent	Normalized Peak Area	Atomic %
As 4p	10.4	10.4	0.12	1.4	1,945	
O 2s	25.0	25.0	0.14	1.4	6,487	
As 3d	45.6	45.6	1.82	1.4	68,690	
As loss	67.1	67.1	0.00	1.4	29,942	
As 3p	145.3	145.3	4.07	1.4	128,540	29.6%
As loss	167.8	167.8	0.00	1.4	17,059	
As Auger	208.8	208.8	0.00	1.4	39,047	
As Auger	233.2	233.2	0.00	1.4	145,382	
As LMM-3	268.4	268.4	0.40	1.4	270,869	
C 1s	286.0	286.0	1.00	1.4	8,106	8.9%
As Auger	341.7	341.7	0.00	1.4	62,610	
As Auger	367.2	367.2	0.00	1.4	48,861	
As Auger	377.9	377.9	0.00	1.4	54,150	
As loss	400.4	400.4	0.00	1.4	10,545	
As Auger	438.5	438.5	0.00	1.4	45,111	
As Auger	464.9	464.9	0.00	1.4	82,310	
O 1s	532.4	532.4	2.93	1.4	119,613	61.5%
O loss	553.9	553.9	0.00	1.4	51,082	
O KLL-1	977.1	977.1	0.70	1.4	25,155	

© 2005 XPS International LLC