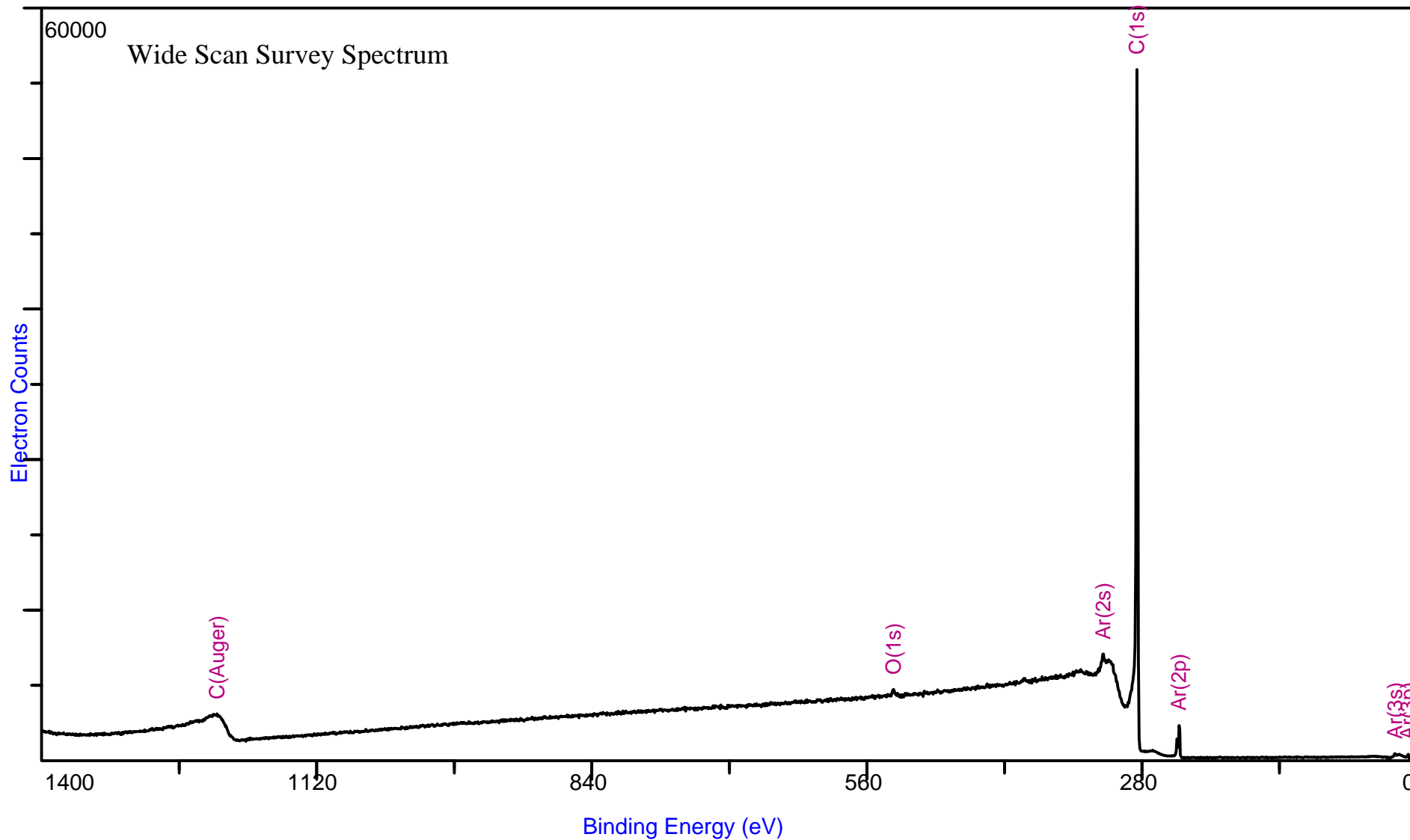


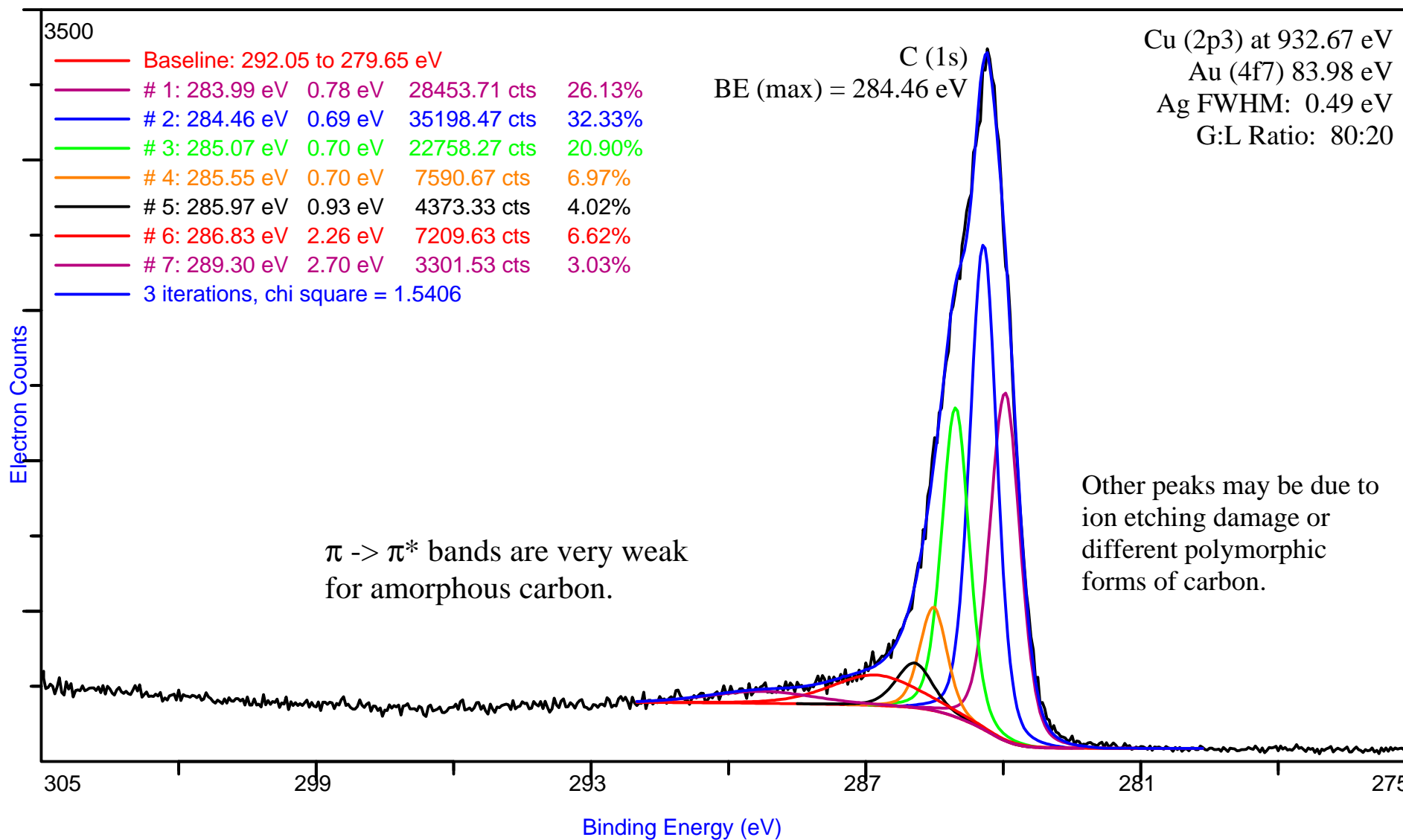
Detailed Surface Composition Table

Description: Carbon (C) [amorphous]

Date: Sun Mar 13 1994

<u>Signal</u>	<u>Corrected</u> <u>BE</u>	<u>Exper.</u> <u>BE</u>	<u>Sens</u> <u>Factor</u>	<u>Norm</u> <u>Area</u>	<u>Relative</u> <u>Area</u>
C Auger	1221.4	1221.4	0.00	11013	0
O 1s	532.6	532.6	2.80	422	151
Ar2s	319.1	319.1	1.96	1178	601
C 1s	284.4	284.4	1.00	32524	32523
Ar2p	241.5	241.5	3.06	1650	539
Ar3s	21.9	21.9	0.24	514	2177
Ar3p	8.5	8.5	0.25	101	400

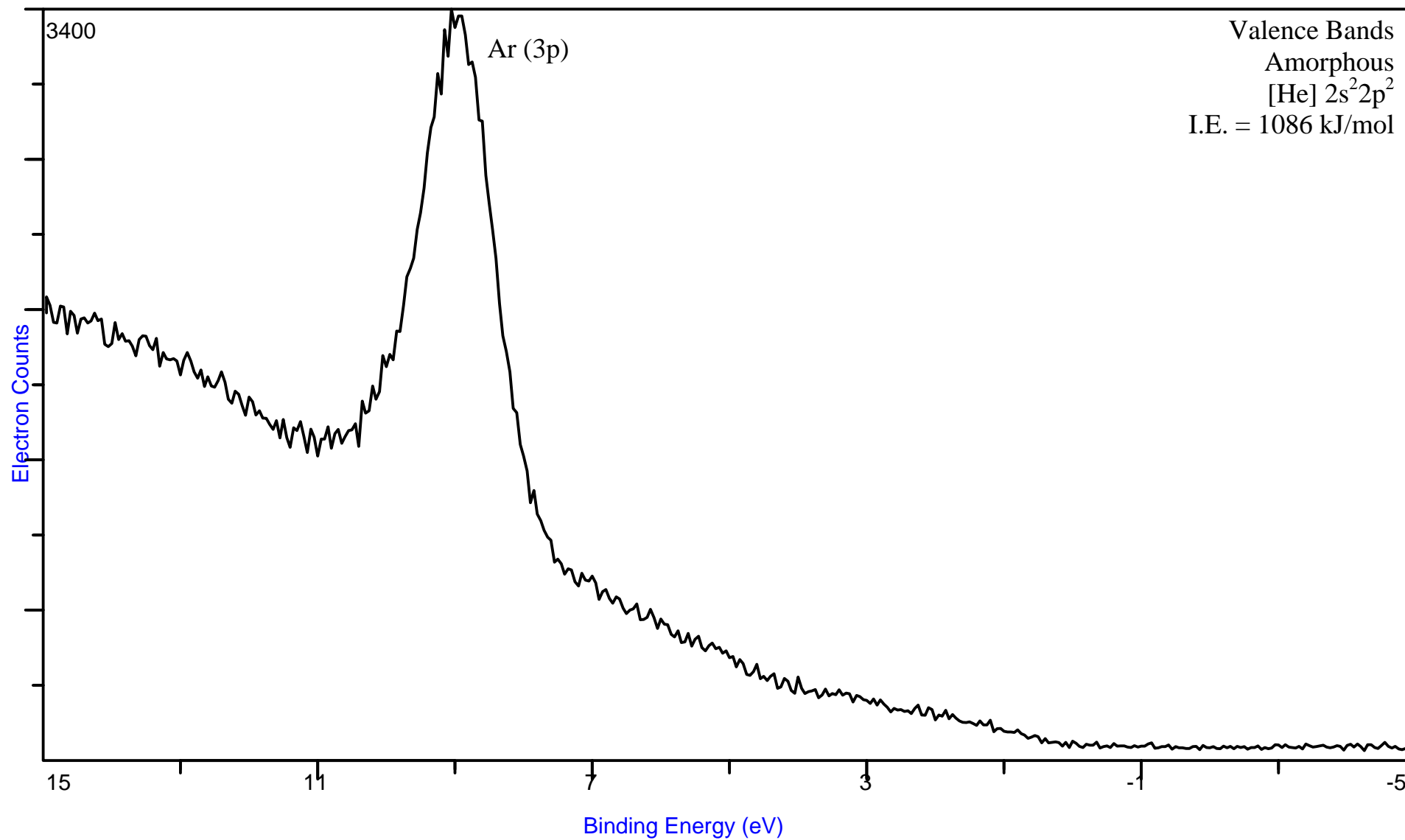




Carbon (Z=6)Amorphous

C⁰

[CAS# 7440-44-0]



Carbon (Z=6) Highly Oriented Pyrolytic Graphite (HOPG)

C⁰

[CAS# 7440-44-0]

